

**Central Brass Company, Inc.**  
3325 S. Garfield Ave.  
Commerce, CA 90040  
(800) 321-8630  
www.centralbrass.com

**Tools:**



Adjustable Wrench



Flat Head Screwdriver



Teflon Tape



Rags

**Model Number: 0033-1/2C(H, P)A-N2**

**Warnings and Notes:**

Check with local plumbing code requirements before installation.

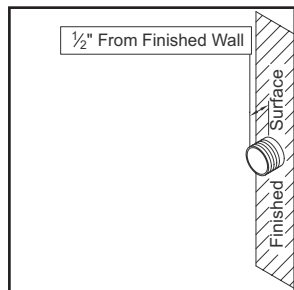
This product should be installed by a local listed plumber.

**Do not use plumbers putty on threads.**

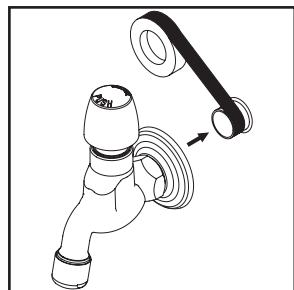


**Installation Steps:**

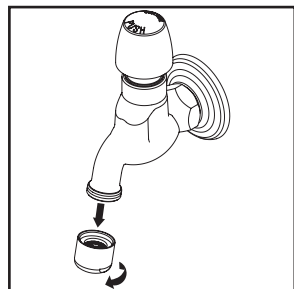
Slow-Close Wallmount Faucet



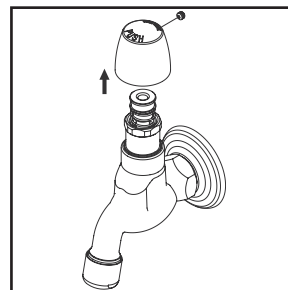
(1) The 1/2" pipe thread nipple must be kept at a minimum length of 1/2" from the finished wall.



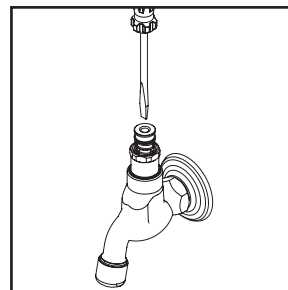
(2) Apply Teflon tape at the threaded end of pipe nipple. Thread and tighten the faucet onto the pipe nipple with the help of wrench. Adjust the flange to against the finished wall.



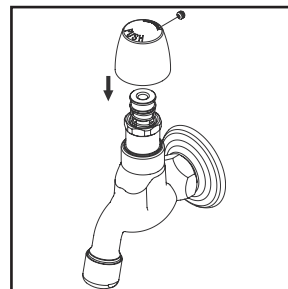
(3) Important: After installation is complete, remove aerator. Turn water supplies on and push handle to allow water to run at least one minute. While water is running, check for leaks. Turn off water and replace aerator.



(4) The slow close cartridge is factory preset timing to 10 seconds@60 PSI. Depending on the inlet water pressure and water temperature this timing can vary. If timing needs to be changed, remove the handle by loosening Allen screw.



(5) With the help of flat head screwdriver, counter-clockwise turn to loosen the screw to decrease the timing and clockwise turn to tighten the screw to increase the timing. The timing can be adjusted from 0 to 60 seconds depending on the inlet pressure and water temperature.



(6) Once the satisfactory timing has been adjusted, install the handle by tightening Allen screw.